



# MONTHLY MEMBERSHIP PROGRESS REPORT

District 5M 9

Results as of: 11/30/2018

GMT: MICHAEL MOLENDIA

LOCATION MINNESOTA

GMT CA

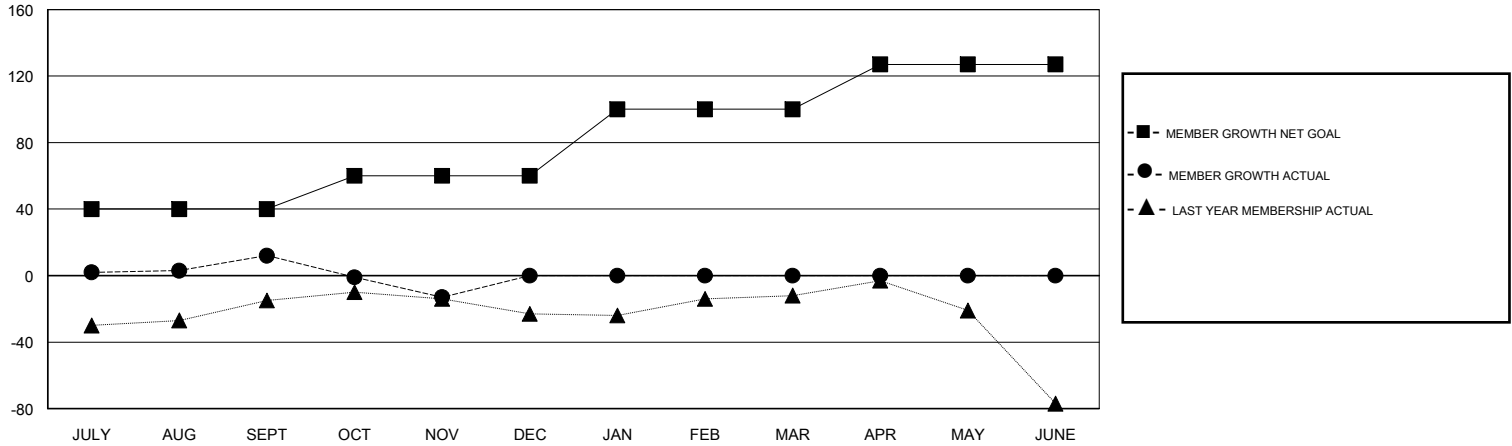
Clubs			
RESULTS FOR 2018-2019			
QUARTER	NEW CLUB GOAL	NEW CLUBS	DROPPED CLUBS
JULY/AUG/SEPT	0	0	0
OCT/NOV/DEC	0	0	1
JAN/FEB/MAR	0	0	0
APR/MAY/JUNE	0	0	0

Members			
RESULTS FOR 2018-2019			
QUARTER	MEMBER GROWTH NET GOAL	MEMBER GROWTH ACTUAL	DROPPED MEMBERS ACTUAL (including transfers)
JULY/AUG/SEPT	40	71	46
OCT/NOV/DEC	20	22	42
JAN/FEB/MAR	40	0	0
APR/MAY/JUNE	27	0	0

GOALS AND ACTUAL NEW CLUBS CUMULATIVE



GOALS AND ACTUAL MEMBERS CUMULATIVE



DROPPED CLUBS: 1
------------------

33 CLUBS OF 67 ADDED 1 OR MORE NEW MEMBERS

GENDER DISTRIBUTION	
MALE	1,382 (62.62%)
FEMALE	825 (37.38%)
Women Percentage Fiscal Year Goal: 0%	

DROPPED MEMBERS	
DECEASED	15
CLUB CANCELLED	0
OTHER	73
<b>TOTAL</b>	<b>88</b>

[CLICK HERE FOR CUMULATIVE MEMBERSHIP DATA](#)

TOTAL FAMILY UNIT MEMBERS	711
FAMILY MEMBERS PAYING HALF DUES	359